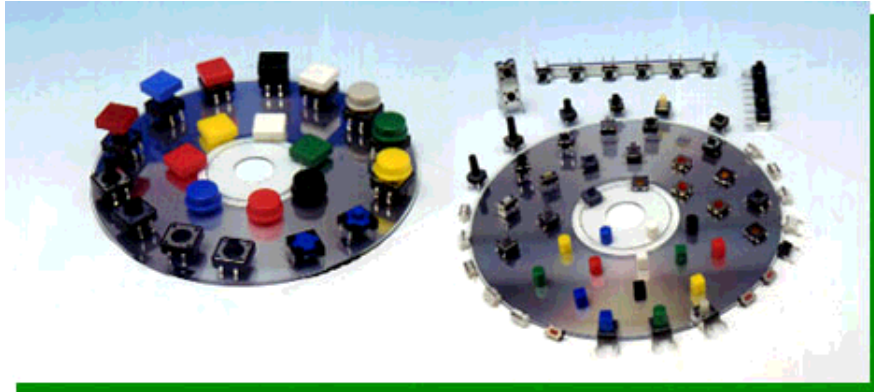


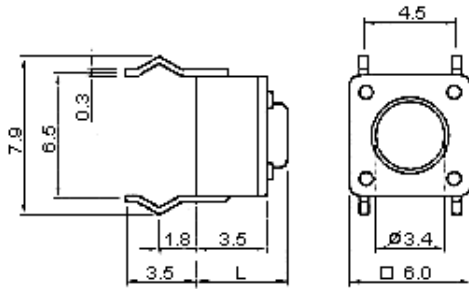
TACT SWITCH



| 1101 | 1102 | 1103 | 1105 | 1106 | 1107 | 1108 | 1127 | 1137 | 1157 | 1167 |

1102 Series

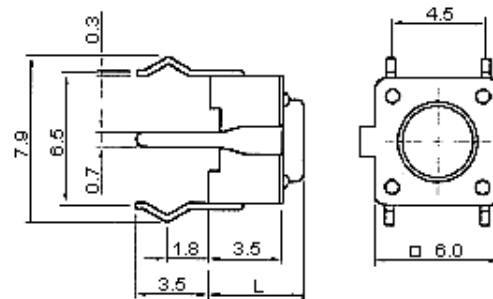
1102



1. Rating : DC 12V. 50mA
2. Travel : 0.25 ± 0.1 mm
3. Operating Force : 130, 160 or 250 ± 30 gf
4. Contact Resistance : $50\text{m}\Omega$ Max
5. Life : 100,000 Cycles Min

Model No.	L(mm)
1102	4.3
1102A	5.0
1102B	7.0
1102C	8.0
1102D	9.5
1102E	7.3
1102F	12.5
1102G	13.5

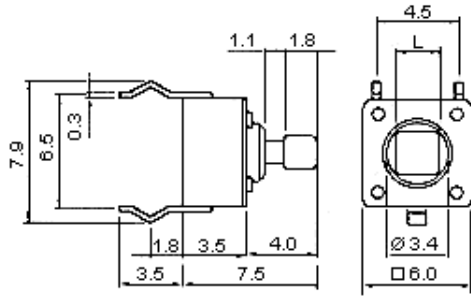
1102P



1. Rating : DC 12V. 50mA
2. Travel : 0.25 ± 0.1 mm
3. Operating Force : 130, 160 or 250 ± 30 gf
4. Contact Resistance : $50\text{m}\Omega$ Max
5. Life : 100,000 Cycles Min

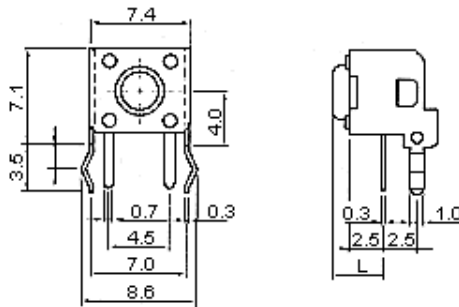
Model No.	Knob(L)
1102PA	4.3
1102PB	5.0
1102PC	7.0
1102PD	8.0
1102PE	9.5
1102PF	12.5

1102T



1. Rating : DC 12V. 50mA
2. Travel : 0.25 ± 0.1 m/m
3. Operating Force : 130, 160 or 250 ± 30 gf
4. Contact Resistance : $50\text{m}\Omega$ Max
5. Life : 100,000 Cycles Min

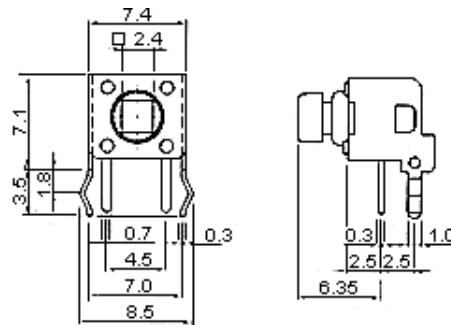
1102V



1. Rating : DC 12V. 50mA
2. Travel : 0.25 ± 0.1 m/m
3. Operating Force : 130, 160 or 250 ± 30 gf
4. Contact Resistance : $50\text{m}\Omega$ Max
5. Life : 100,000 Cycles Min

Model No.	Knob(L)
1102V	3.15
1102VA	3.85
1102VB	5.85
1102VC	8.35
1102VE	6.15
1102VF	11.35

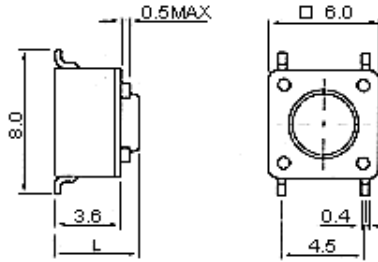
1102VT



1. Rating : DC 12V. 50mA
2. Travel : 0.25 ± 0.1 m/m
3. Operating Force : 130, 160 or 250 ± 30 gf
4. Contact Resistance : $50\text{m}\Omega$ Max
5. Life : 100,000 Cycles Min

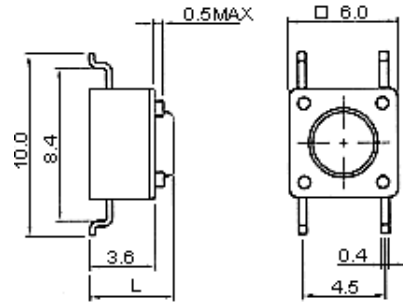
1102NE

1102S



1. Rating : DC 12V. 50mA
2. Travel : 0.25 ± 0.1 m/m
3. Operating Force : 130, 160 or 250 ± 30 gf
4. Contact Resistance : $50m\Omega$ Max
5. Life : 100,000 Cycles Min

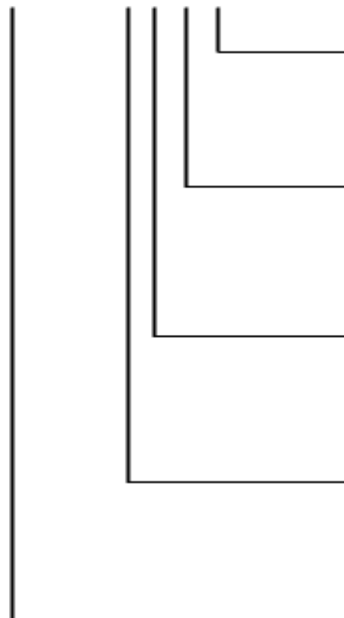
*Without Embossing



1. Rating : DC 12V. 50mA
2. Travel : 0.25 ± 0.1 m/m
3. Operating Force : 130, 160 or 250 ± 30 gf
4. Contact Resistance : $50m\Omega$ Max
5. Life : 100,000 Cycles Min

1102M SERIES CODE EXPLANATION

1102M-13NS



OPERATING FORCE

O/FORCE	130±30gf	160±30gf	250±30gf
CODE	N	S	X

STEM LENGTH (UNIT : MM)

S/LENGTH	3.15	3.85	5.85	8.35	6.85	6.15
CODE	N	A	B	C	D	E

NUMBER OF KEYS

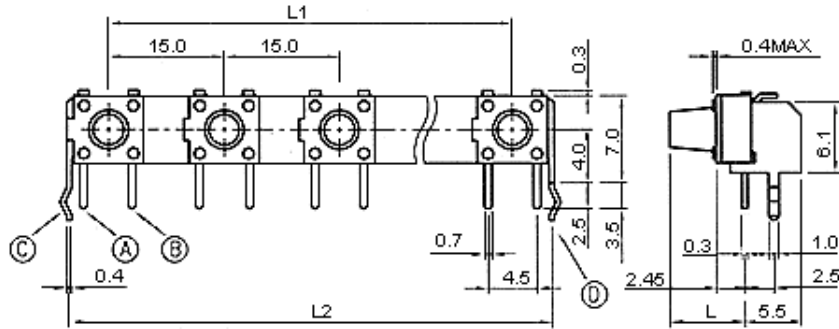
NO. OF KEYS	3	4	5	6	7	8	9
CODE	3	4	5	6	7	8	9

KEY PITCH (UNIT : MM)

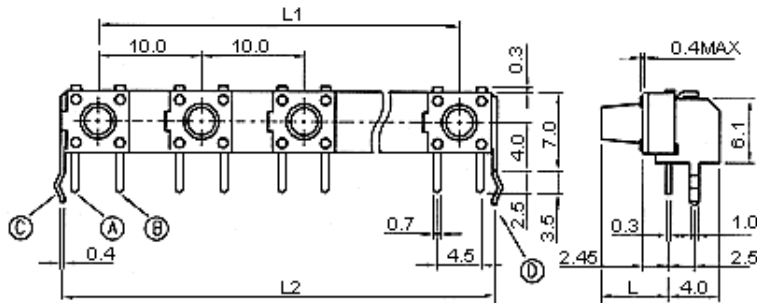
KEY PITCH	10	15
CODE	1	2

1102M SERIES

1102M

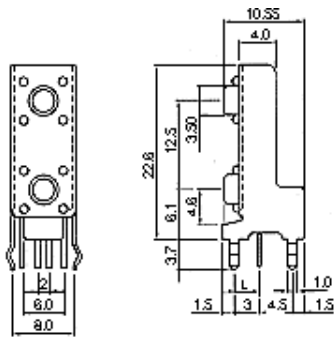


NO. OF KEYS	3	4	5	6	7	8	9
L1		45	60	75	90		
L2		52	67	82	97		



NO. OF KEYS	3	4	5	6	7	8	9
L1	20	30	40	50	60	70	80
L2	27	27	47	57	67	77	87

1102MV



Model No.	Knob(L)
MV	3.15
MVA	3.85
MVB	5.85
MVC	8.35
MVD	6.85
MVE	6.15

1. Rating : DC 12V. 50mA
2. Travel : 0.25 ± 0.1 m/m
3. Operating Force : 130, 160 or 250 ± 30 gf
4. Contact Resistance : $50\text{m} \Omega$ Max
5. Life : 100,000 Cycles Min

 TACT SWITCH

 SMT REEL-PACKAGING
TACT SWITCH

 PUSH SWITCH

 HOOK SWITCH

 MICRO SWITCH

 ROCKER
SWITCH

 TOGGLE & SLIDE
SWITCH

 FUSE HOLDER & OTHERS

 [Company Profile](#)

 [What's New](#)

 [Product List](#)

 [Contact Us](#)

 [Back to Home](#)