

CodeWarrior

Development Suite

Eclipse Quick Reference Windows ® Hosted



Menus and Keyboard Shortcuts (some menus/items can be hidden in any perspective)

File Menu		
New	Alt+Shift+N	▶
Open Path	Ctrl+Shift+A	
Open File		
Close	Ctrl+W	
Close All	Ctrl+Shift+W	
Save	Ctrl+S	
Save As		
Save All	Ctrl+Shift+S	
Revert		
Move		
Rename	F2	
Refresh	F5	
Convert Line Delimiters To		▶
Print	Ctrl+P	
Switch Workspace		▶
Restart		
Import		
Export		
Properties	Alt+Enter	
Exit		
Edit Menu		
Undo	Ctrl+Z	
Redo	Ctrl+Y	
Cut	Ctrl+X	
Copy	Ctrl+C	
Paste	Ctrl+V	
Delete	Delete	
Select All	Ctrl+A	
Find/Replace	Ctrl+F	
Find Next	Ctrl+K	
Find Previous	Ctrl+Shift+K	
Incremental Find Next	Ctrl+J	
Incremental Find Previous	Ctrl+Shift+J	
Add Bookmark		
Add Task		
Show Tooltip Description	F2	
Word Completion	Alt+/	
Quick Fix	Ctrl+1	
Set Encoding		

Source Menu	
Toggle Comment	
Add Block Comment	
Remove Block Comment	
Shift Right	
Shift Left	
Correct Indentation	
Format	
Add Include	
Sort Lines	
Refactor Menu	
Rename	
Extract Local Variable	
Extract Constant	
Extract Function	
Toggle Function	
Hide Method	
Apply Script	
Create Script	
History	
Search Menu	
Search	Ctrl+H
File	
C/C++	
Text	▶
Project Menu	
Open Project	
Close Project	
Build All	Ctrl+B
Build Configurations	▶
Build Project	
Build Working Set	▶
Clean	
Make Target	▶
Properties	

▶ Denotes a hierarchical menu

Note: Most of these menu items are dynamic and will change relative to the active context.



Menus and Keyboard Shortcuts (Continued)

MQX Tools Menu

- Attach to target
- Detach from target
- RuntimeTAD Preferences
- Performance data viewer
- Stack Usage
- CPU Usage view
- Timeline view
- MQX Tools documentation

Processor Expert Menu

- Show Views
- Hide Views
- Import Component(s)

Run Menu

- Instruction Stepping Mode
- Move to Line (C/C++)
- Resume At Line (C/C++)
- Resume
- Suspend
- Terminate
- Disconnect
- Resume Without Signal
- Step Into
- Step Over
- Step Return
- Run to Line
- Run Ctrl+F11
- Debug F11
- Run History ▶
- Run As ▶
- Run Configurations
- Debug History ▶
- Debug As ▶
- Debug Configurations
- Toggle Breakpoint Ctrl+Shift+B
- Toggle Line Breakpoint
- Toggle Method Breakpoint
- Toggle Watchpoint
- Skip All Breakpoints
- Remove All Breakpoints
- Breakpoint Types ▶
- Reset
- Multicore Resume Alt+Shift+F8
- Multicore Suspend
- Multicore Restart
- Multicore Terminate
- External Tools ▶

Window Menu

- New Window
- New Editor
- Hide Toolbar
- Open Perspective ▶
- Show View ▶
- Customize Perspective
- Save Perspective As
- Reset Perspective
- Close Perspective
- Close All Perspectives
- Navigation ▶
- Refresh Debug Views
- Preferences

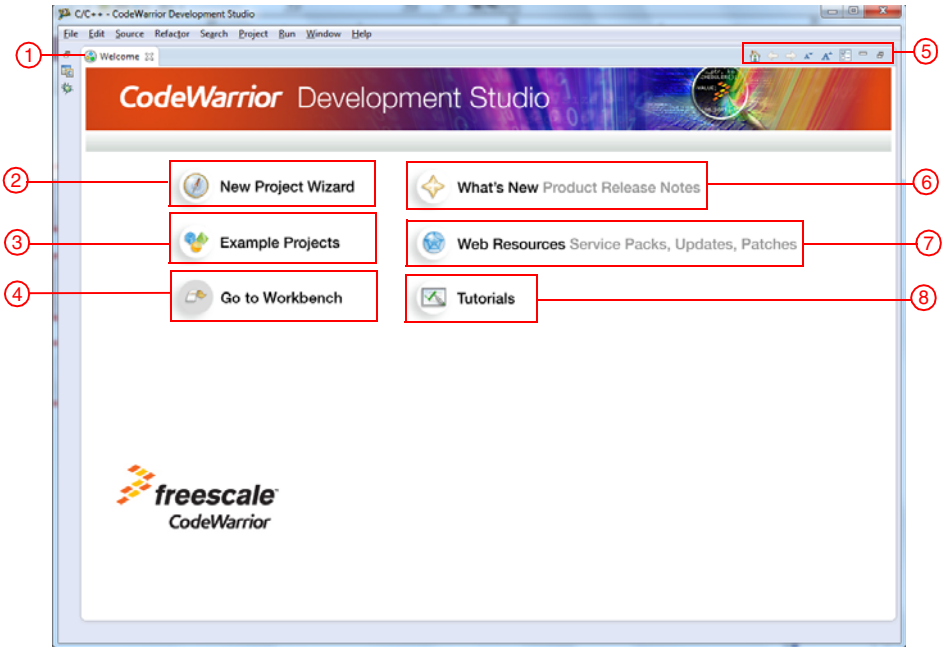
Help Menu

- Welcome
- Help Contents
- Search
- Dynamic Help
- Key Assist Ctrl+Shift+L
- Videos
- Tips and Tricks
- Cheat Sheets
- Check for Updates
- Install New Software
- Documentation
- About CodeWarrior Development Studio
- Freescale Licenses

▶ Denotes a hierarchical menu

Note: Most of these menu items are dynamic and will change relative to the active context.

Welcome Page

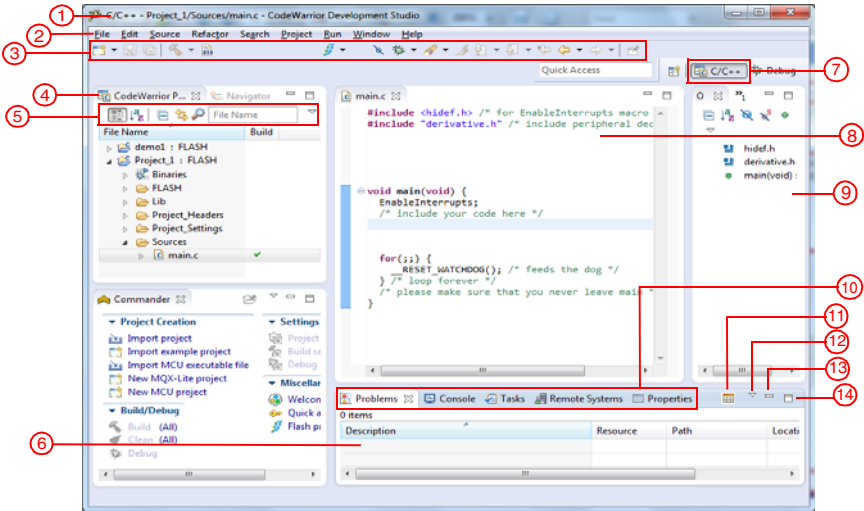


1. Welcome page—the first page you see when you launch Eclipse IDE for the first time
2. Launches the New Project wizard
3. Starts CodeWarrior Project Importer wizard. You can use the Eclipse Import Wizard to import example projects into your workspace.
4. Takes you to the Workbench window
5. Welcome page toolbar. Toolbar options include (from left to right):
 - Home
 - Navigate to previous topic
 - Navigate to next topic
 - Reduce
 - Magnify
 - Customize page
 - Minimize
 - Restore
6. Gives you information about the major new features in this release of the product
7. Takes you to freescale.com/codewarrior
8. Takes you to the Tutorials page that provides links to the Cheat Sheets, Getting Started guide and Help system

Tips and Tricks

- To return to the Welcome page or to access the Welcome page from the Workbench window, select Help > Welcome from the IDE menu bar.
 - To customize the Welcome page, click the Customize page icon in the Welcome page toolbar. In the Customize dialog box, click the appropriate tab and make the required changes.
- * Depending on the product you are working with, there may be a slight variation in the screenshot of the Welcome page above and/or the screenshots on page 3-10 of this card.

Workbench Window-C/C++ Perspective

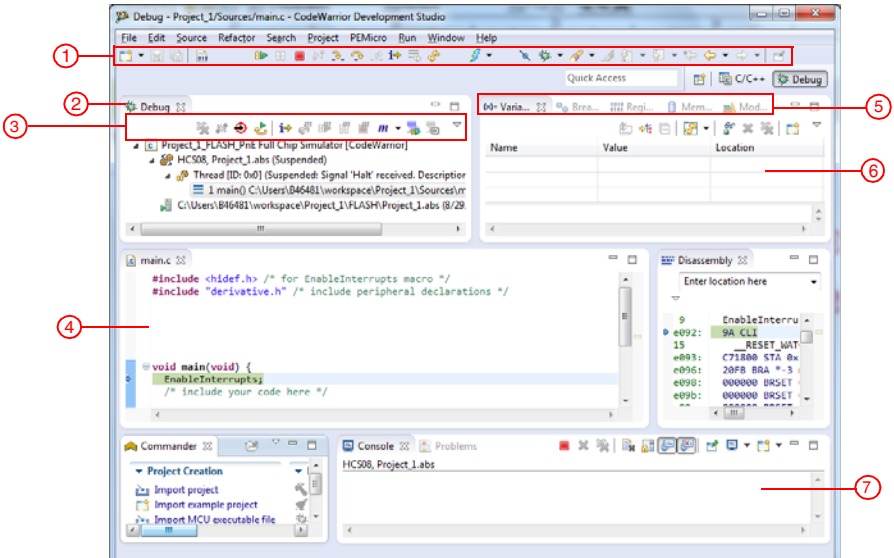


1. Workbench window
2. Workbench menu bar
3. Workbench toolbar containing commands for C/C++ perspective
4. CodeWarrior Projects view toolbar
5. CodeWarrior Projects view toolbar
6. Problems view
7. Perspective switcher. Toolbar options include (from left to right):
 - Open perspective
 - C/C++ perspective
8. Editor area
9. Outline view
10. Tabbed views or View stack (Problems, Console, Tasks, Remote Systems, and Properties views)
11. Toggle visibility of details pane
12. Problems view pull-down menu. Menu options include:
 - Show
 - Group By
 - Sort By
 - New Problems View
 - Configure Contents
 - Configure Columns
13. Click to minimize the View stack (in this case, for the Problems view)
14. Click to maximize the View stack (in this case, for the Problems view)

Tips and Tricks

- To activate a view that is part of a tabbed view or view stack, click its tab.
- Press Ctrl+F6 to switch between editors, Ctrl+F7 to switch between views, Ctrl+F8 to switch between perspectives, and F12 to activate the editor.
- To see a complete list of the currently available key bindings in the editor or view you are currently working with, press Ctrl+Shift+L.
- To quickly import files and folders to your workspace, drag them from the Windows file system to a view, such as CodeWarrior Projects view. Similarly, to export files and folders, drag them from a view to the Windows file system.
- To change the default way perspective opens in the Workbench window, such as to open it in a different window, use the Open a new perspective options in the Window > Preferences > General > Perspectives page.
- Right-click the title of a view to:
 - Display it as a fast or detached view
 - Restore or move the view
 - Minimize, maximize, or close the view
 - Size the view to left, right, top or bottom

Workbench Window—Debug Perspective

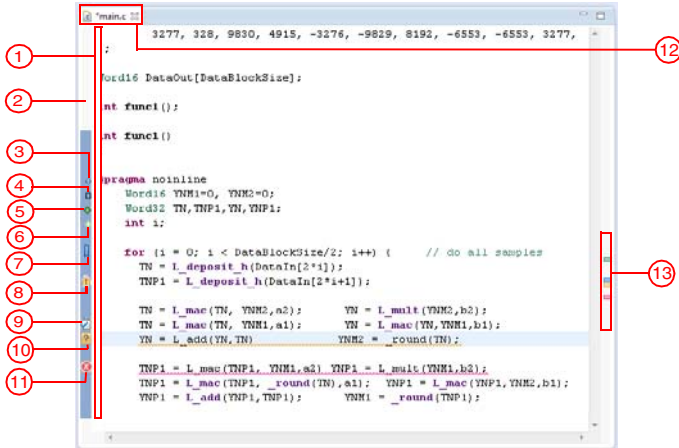


1. Workbench toolbar containing commands for Debug perspective
2. Debug view
3. Debug view toolbar
4. Editor area
5. View stack (Variables, Registers, Breakpoints, Memory, Modules)
6. Variables view
7. Console view

Tips and Tricks

- To open other views in a perspective, select Window > Show View > Other and select a new view from the Show View dialog box.
- To save the changes made in the current perspective, select Window > Save Perspective As.
- To return the perspective to its original state, select Window > Reset Perspective.
- To open a new perspective, select Window > Open Perspective > Other and select a new perspective from the Open Perspective dialog box.

Editor Area

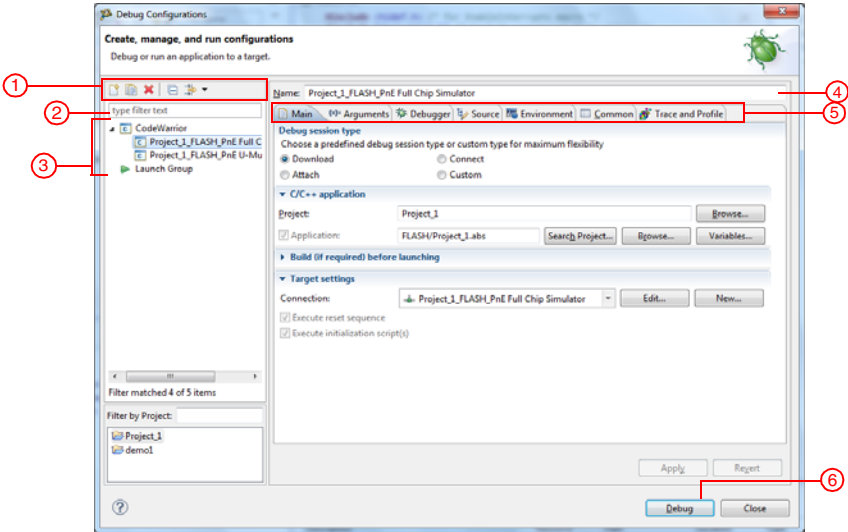


1. Quick diff, which displays color-coded indication for additions, deletions, or changes made to the contents of a file
2. Marker Bar
3. Auto Breakpoint
4. Hardware Breakpoint
5. Software Breakpoint
6. Disabled Breakpoint
7. Bookmark Marker
8. Warning Marker
9. Task Marker
10. Indexer Marker
11. Error Marker
12. An asterisk (*) appearing at the left side of the tab indicates that the editor has unsaved changes
13. Icons that flag error, warning, task and bookmark markers. You can view extra information by placing the mouse cursor over the marker

Tips and Tricks

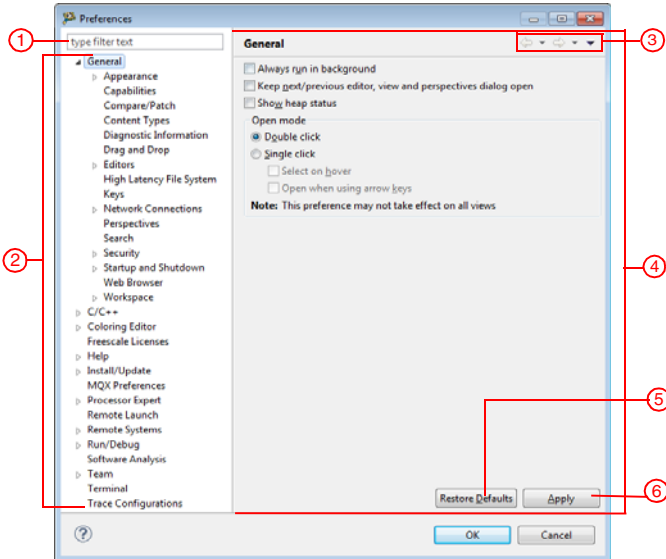
- To open a list of all open editors and quickly switch between editors, press Ctrl+E.
- You can open a file in the editor area by dragging the item from a view, such as CodeWarrior Projects or Project Explorer and dropping it over the editor area.
- To activate single-click opening for editors, use the Open mode options in the Window > Preferences > General page. In single-click mode, a single-click on a file selects and immediately opens the file.
- Double-clicking in the marker bar (2) sets or removes breakpoints.
- To move lines up and down in the editor, press Alt+Arrow Up and Alt+Arrow Down.
- To view two or more sections of a source file at the same time, open a similar editor using Window > New Editor. Drag the new editor tab and drop it over the left, right, top, or bottom border of the editor area.
- To activate code completion, press Ctrl+Space.
- To activate quick diff, right-click the markerbar (2) and select Show Quick Diff from the context menu.
- When the mouse cursor is placed over a change in Quick Diff (1), a hover displays the original content, which can be restored using the marker bar context menu.

Debug Configurations Dialog Box



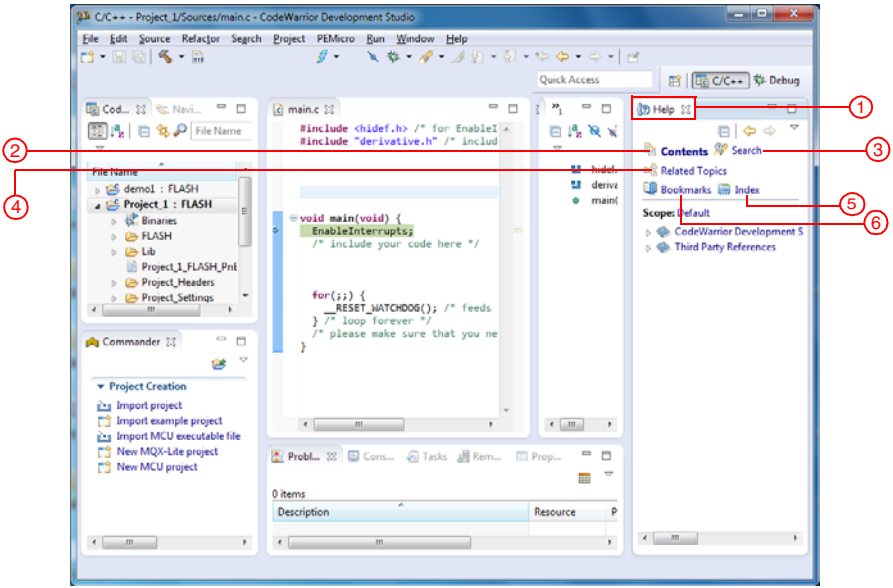
1. Toolbar options include (from left to right):
 - New launch configurations
 - Duplicates the currently selected launch configuration
 - Delete selected launch configuration(s)
 - Collapses all expanded launch configurations
 - Filter launch configurations
2. Type text to filter the launch configurations
3. List of launch configurations that apply to the current application. CodeWarrior generates launch configurations with names that follow the pattern projectname-configtype-target-type
4. Specifies the name of launch configuration selected in the list (3)
5. Click to maximize the View stack (in this case, for the Problems view)
 - Main: Identifies the project and application you want to debug
 - Arguments: Specifies the program arguments and working directory that an application uses for a debug configuration
 - Debugger: Specifies the debugger to use when debugging an application
 - Source: Specifies the location of source files used when debugging an application
 - Environment: Specifies environment variables and values to use when an application runs
 - Common: Specifies the location in which to store the run configuration and how to access it, how standard input and output is handled, and if background launches are enabled or not
 - Trace and Profile: Specifies the trace and profiling options required for hardware profiling
6. Click to debug the selected launch configuration

Preferences Dialog Box



1. Type text to filter the preference panels
2. Select a preference panel from the hierarchical list to view and edit its settings on the right. The collection of panels varies, depending on the current build target and chosen settings
3. Allows you to navigate through the previously viewed pages
4. Edit preference settings in this panel
5. Restore default settings
6. Save settings for the current project

Help View

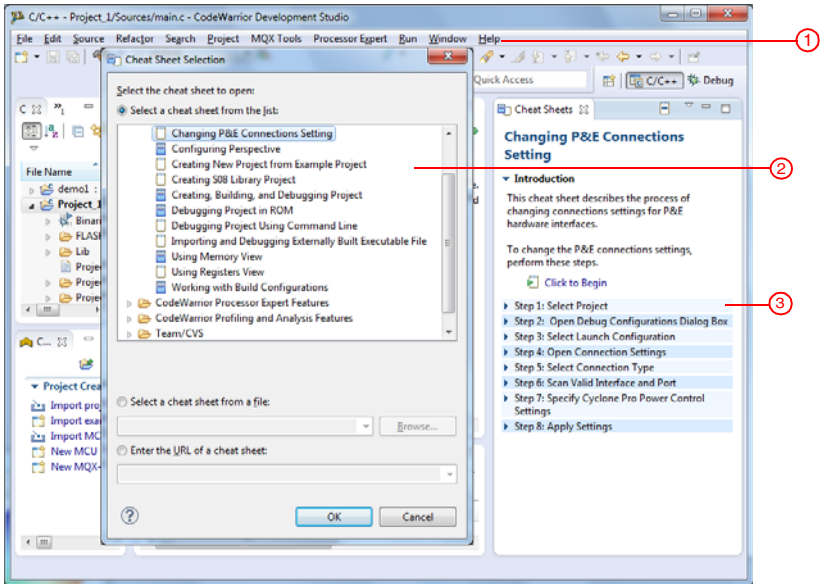


1. Help view
2. Click to display a list of all the help topics provided with the IDE
3. Click to activate the Help documentation search functionality
4. Click to view the related help topics
5. Click to view an index of the help documentation
6. Click to view the bookmarked help topics

Tips and Tricks

- To open the Help view, select Help > Dynamic Help or Help > Search.
- You can press F1 to activate context-sensitive help.
- Help window—You can also access the help system in the Workbench window using the Help window, which opens as a separate window. To open the Help window, select Help > Help Contents.


Cheat Sheets



1. To launch a cheat sheet in the Workbench window, select Help > Cheat Sheets
2. From the Cheat Sheet Selection dialog box, select the cheat sheet you want to open
3. Follow the steps given in the cheat sheet to perform a particular task, such as Changing P&E Connections Setting.

Other Tips and Tricks



Search Dialog Box

- You can open the Search dialog box by clicking  on the Workbench toolbar or using the Search menu
- The File Search tab allows you to search for files or text in the Workbench
- The C/C++ Search tab allows you to search C/C++ elements, such as class, struct, function, variable, union, field, enumeration and namespace
- The search functions support the following wildcards: Use * to represent any series of characters Use ? to represent any single character Use \ to represent literals, such as *, \?

Properties Dialog Box

- You can open the Properties dialog box by right-clicking a project in a view, such as CodeWarrrior Projects or Project Explorer, and selecting Properties from the context menu
- The left pane of this dialog box has a Properties list. This list shows the build properties that apply to the current project
- You can use the right pane to modify the build properties of the project, as required. For example, to set properties for linker, assembler, and compiler, select C/C++ Build > Settings in the left pane. You can make the required changes in the Tool settings page in the right pane

Miscellaneous

- To rename an object in a project, such as class and type name, variable, and method, right-click on the object in the editor area and select Refactor > Rename or press Alt+Shift+R. The refactoring engine renames all instances of the object in all referenced files. You can undo refactoring by right-clicking the object again and selecting Refactor > Undo
- To set software and hardware breakpoint, right-click the marker bar in the editor area and select Set Special Breakpoint > Software or Hardware respectively
- You can link the navigation views, such as CodeWarrrior Projects and Project Explorer, with the editor to automatically activate the file in editor every time you select that the file in the view. To link the view to the editor, click  in the view toolbar
- To open a file in a different editor other than the default editor, select Open With from the file's context menu and select the required editor
- To restore a maximized view, click the  icon.

Learn More:

For more information about Freescale products, please visit www.freescale.com/codewarrior.

Freescale, the Freescale logo, and CodeWarrrior are trademarks of Freescale Semiconductor, Inc., Reg. U.S. Pat. & Tm. Off. Processor Expert is are trademark of Freescale Semiconductor, Inc. All other product or service names are the property of their respective owners.

© 2010 - 2014 Freescale Semiconductor, Inc.

CWMCUQRCARD
10.6, 03/2014

