



UNICAMP

IA369E - Tópicos em Engenharia de Computação VI
2º Semestre de 2012

Visualização dos dados em simulação de partículas por *SPH*

¹Edgar Andrés Patiño Nariño

Departamento de Mecânica Computacional – DMC

Faculdade de Engenharia Mecânica – FEM

Universidade Estadual de Campinas - UNICAMP

eapatinon@fem.unicamp.br

Visualização em SPH

Partículas

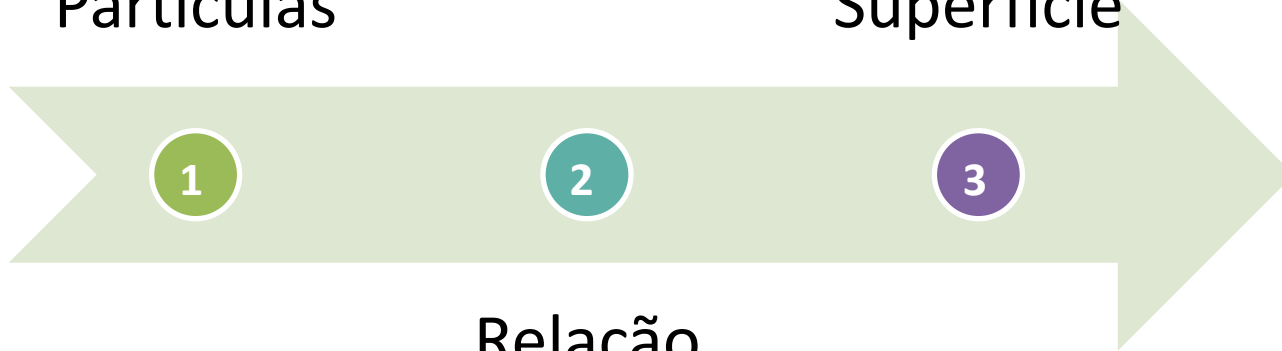
Superfície

1

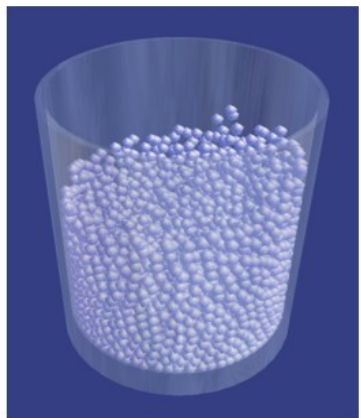
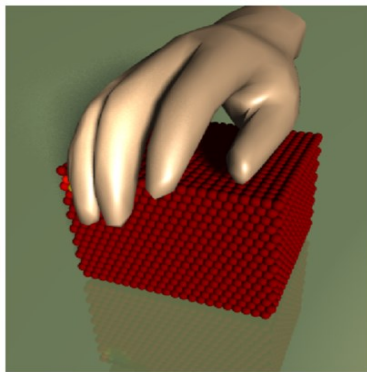
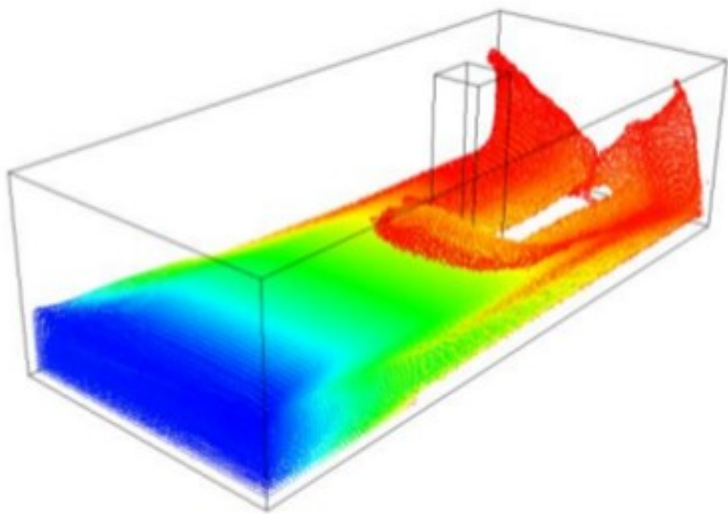
2

3

Relação
entre
partículas



Partículas



Visualização em SPH

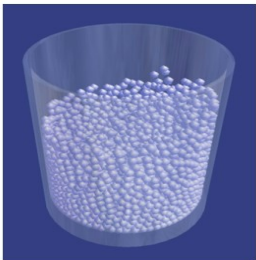
Partículas

Superfície

1

2

3



Relação
entre
partículas

Relação entre partículas

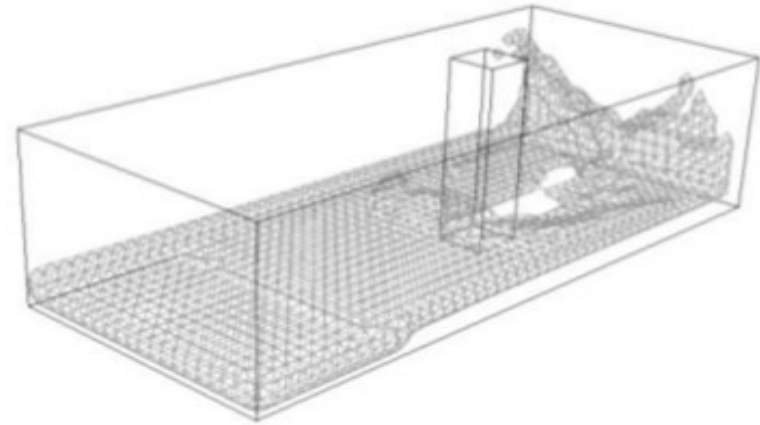
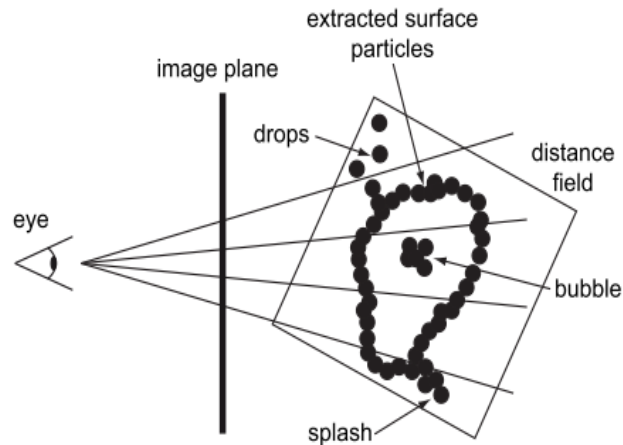
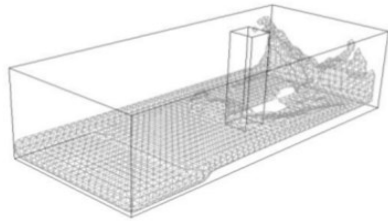


Figure 6: Rays travelling through the rasterized distance field have to be intersected with surface particles only.

Visualização em SPH

Partículas

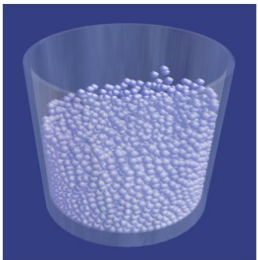


Superfície

1

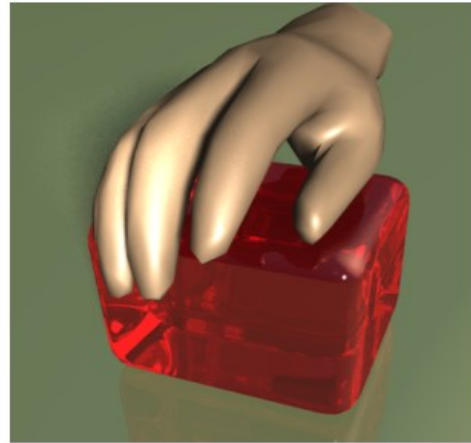
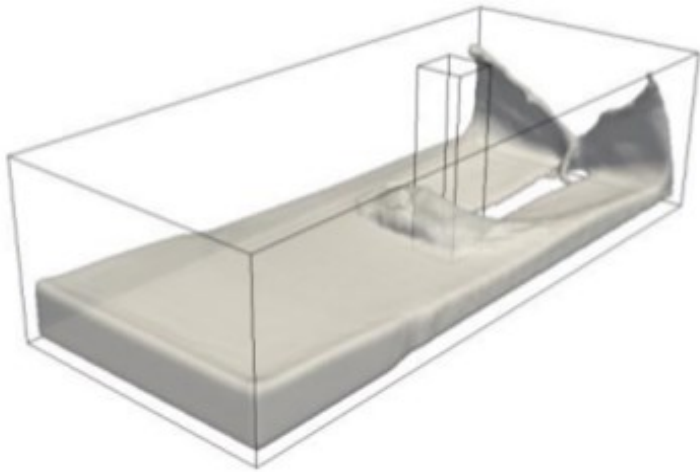
2

3



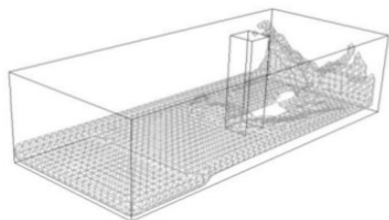
Relação
entre
partículas

Superfície



Visualização em SPH

Partículas

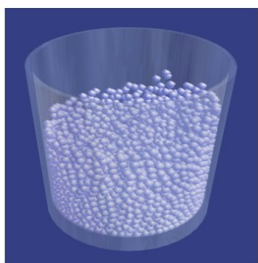


Superfície

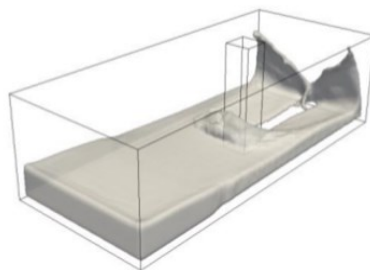
1

2

3

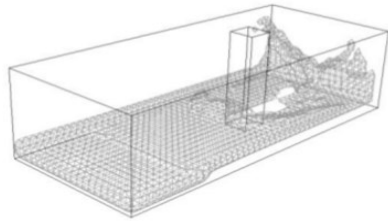


Relação
entre
partículas

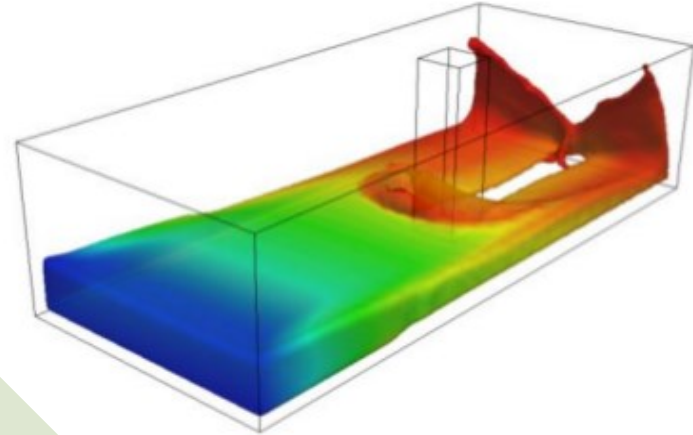


Visualização em SPH

Partículas



Superfície

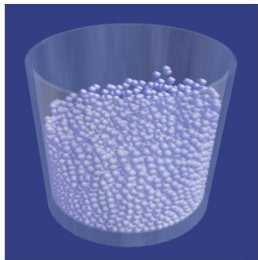


1

2

3

Interação com a
simulação



Relação
entre
partículas

